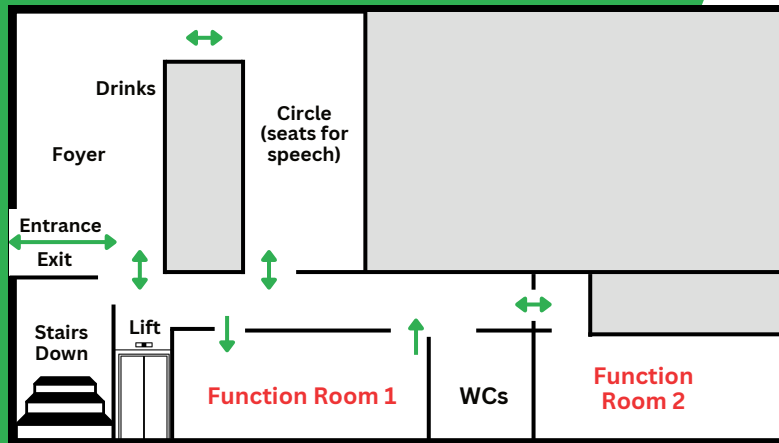
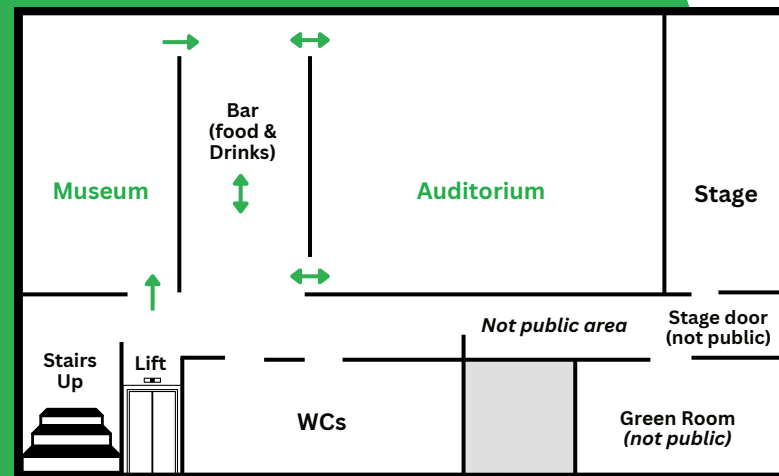


Upper Floor



Lower Floor



Join today! – Please support the Harpenden & District Local History Society. We are a charity run by volunteers – visit the Membership Desk in Function Room 1 or in the Foyer. You can also apply online.

Single £15.00, Joint £20. Special offer.

These standard rates normally buy membership to end 2024; today only, to end 2025. Alternatively, you may donate.

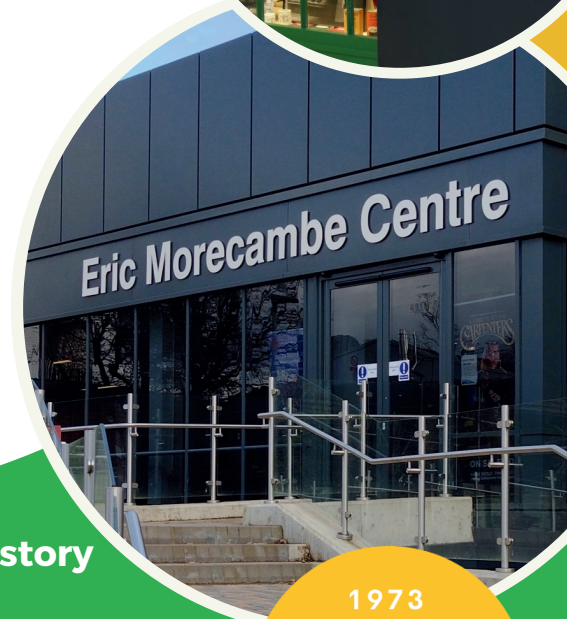
This Harpenden Local History Day is being held at the EMC with the kind permission of Everyone Active.

YOUR GUIDE TO HARPENDEN LOCAL HISTORY DAY



Welcome to the Harpenden Museum

Free Entry



Be part of Harpenden's History

Sat 20 April 11am-3pm



www.harpenden-history.org.uk
Eric Morecambe Centre,
Rothamsted Park, Harpenden.

1973
50
2023

Upper Floor Function Room 1

(for floor plans see over)

Keynote Exhibition

Growth of Harpenden
through 15 picture
boards, with over 140
maps and photos



Children's Quiz & Art



Roman Soldier



Archaeological Artefacts



Enquiries & Membership



harpenden racecourse
drone video

10 minute talks

- 11.45 **Dr Alan Punter** – *Victorian Village Life* (Board 4)
- 12.15 **Dr Philip Smith** – *Traffic Congestion* (Board 5)
- 12.45 **David Kendall** – *Sports* (Board 9)
- 1.30 **Dr Alexander Thomas** – *Railways* (Board 6)
- 2.00 **Rosemary Ross** – *Harpenden Schools* (Board 12)

Foyer – Enquiries, Membership, Drinks & Seating.

First aid, lost child and emergencies. Tell a member of EMC staff; otherwise, a marshal wearing a lanyard.

Scan the QR code on the front for late changes to the programme, additional information, feedback, donations & membership.

Queries concerning the Day – speak to a Society exhibitor, speaker or any marshal wearing a lanyard.

Annie Brewster is High Sheriff of Hertfordshire 2024-25 in Nomination until Declaration on 17 April.

Upper Floor Function Room 2

20 minute talks

- 12.00 **Annie Brewster**, High Sheriff of Hertfordshire: *A Brief History of the Office of High Sheriff*
- 12.20 **Dr Alexander Thomas**, Independent Archaeological & Historical Researcher: *Grain, Trade and Pilgrims: Harpenden from Prehistory to the Medieval*
- 1.00 **Amanda J Thomas**, Author and Historian: *Medieval Harpenden, The Plague and its Consequences*
- 1.40 **Dr Tony Berk**, Scientist, Author, Local Historian & Tour Guide: *Was Harpenden important even before the Railways?*
- 2.20 **Stephanie Reynard**, Vice-Chairman: The Arts Society Harpenden Evening (TASHE). *Francis (Frank) Owen Salisbury of this Parish (1874-1962)*

Lower Floor Auditorium

- 11.15 **Opening Speech by Annie Brewster**, High Sheriff of Hertfordshire 2024-25
- 2.30 Awards for children's 'My Harpenden' art competition

On display
'My Harpenden'
children's art
competition

Browse in the museum and ask questions!

- Harpenden Society
- Rothamsted Research
- St Albans & Hertfordshire Architectural & Archaeological Society (SAHAAS)
- The Arts Societies (TASHE & TASHA)
- Wheathampstead History Society
- Redbourn Village Museum

Bar – Refreshments & Drinks - tables available in the Foyer