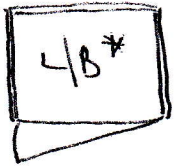


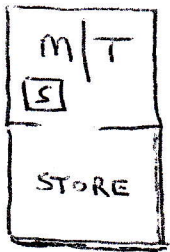
L/B = loose box



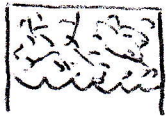
= Some sort of fenced off open shed/shelter? for trailers. Once used for ponies? winter of 1963 and later converted to stables.



= Loose box next to muck heap. Had very wide doors (full width)? could have been made to store carriage.



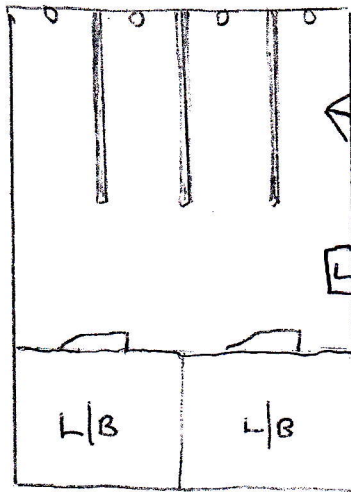
= Main tackroom with coke stove. opening to: - further tack/rug/equipment store



= Muckheap



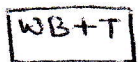
= Feed shed



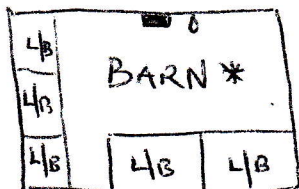
BARN-TYPE STABLE (called 'The long stable' with 4 pony stalls with wooden dividers. Where ponies lived tied up.

HAY LOFT ABOVE

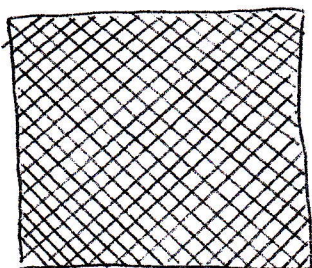
[L] fixed ladder to hayloft



= Water butt + tap.



= spare space in barn had electric sockets + tie ring - used for clipping/trimming horses and for blacksmith to work.



= This area was a couple of sheds/stables which were pulled down to make way for haybarn when Christophers acquired the hay rights to Harpenden Common.