

Sketchbook

Place of origin: Britain (made)

Date: 1860s (made)

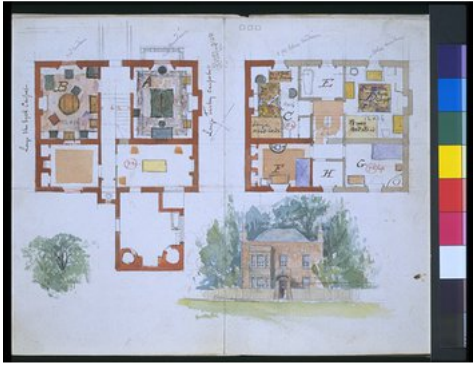
Artist/Maker: Godwin, Edward William, born 1833 - died 1886 (artist)

Materials and Techniques: Pencil, pen and ink and watercolour on ruled paper

Credit Line: Given by Mr Edward Godwin, son of the artist

Museum number: E.273-1963

Gallery location: Prints & Drawings Study Room, level E, case A, shelf 123, box C



Descriptive line

Sketchbook containing various architectural designs, plans and elevations, including a project possibly for the artist's house at Fallows Green. 24 pages of ruled paper (with inserted sheets) thread-stitched in marbled boards. Pencil, pen and ink and water-colour drawings by Edward William Godwin, 1860s.

Physical description

Sketchbook containing designs for houses, including a project possibly for the artist's house at Fallows Green, a design for a mortuary chapel, and a ground plan of 197 Albany Street, together with designs, one showing features of A.S. Wortley's house in Tite Street, Chelsea and one with plans and a front elevation of 'The Red House', Gustard Wood Common, Wheathampsted. 24 pages of ruled paper (with inserted sheets) thread-stitched in marbled boards.

Dimensions

Height: 22.9 cm size of volume, Width: 19.1 cm size of volume

Museum number

E.273-1963

URL

<http://collections.vam.ac.uk/item/O699194/sketchbook-godwin-edward-william/>